

# 1SP0335x2xx-65

## Preliminary Data Sheet

Compact, high-performance, plug-and-play single-channel IGBT driver based on SCALE-2 technology for individual and parallel-connected modules in 2-level, 3-level and multilevel converter topologies

### Abstract

The SCALE-2 plug-and-play driver 1SP0335x2xx-65 is a compact single-channel intelligent gate driver designed for 6500V 130x140mm and 190x140mm IGBT modules. The master driver 1SP0335x2Mx-65 features a fiber-optic interface. It can be used as stand-alone driver or in conjunction with up to three 1SP0335D2Sx-65 slaves to drive up to four parallel-connected IGBT modules.

The DC/DC power supply must be purchased as a separate unit (one per master driver).

**The turn-on and turn-off gate resistors as well as the auxiliary gate capacitor are not assembled in order to provide maximum flexibility. They must be assembled by the user before start of operation.** Please refer to the paragraph on "Gate Resistor Assembly" for the recommended values.

For drivers adapted to other types of high-power and high-voltage IGBT modules, refer to:

[www.IGBT-Driver.com/go/plug-and-play](http://www.IGBT-Driver.com/go/plug-and-play)

### Features

- ✓ Plug-and-play solution
- ✓ Allows parallel connection of IGBT modules
- ✓ For 2-level, 3-level and multilevel topologies
- ✓ Fiber-optic links (master)
- ✓ Built-in interface to 1SP0335D2Sx (slave)
- ✓ Duty cycle 0...100%
- ✓ Dynamic Advanced Active Clamping DA<sup>2</sup>C
- ✓ Dynamic IGBT short-circuit protection
- ✓ Monitoring of supply voltage
- ✓ Monitoring of gate voltage
- ✓ Extremely reliable; long service life
- ✓ Shortens application development time
- ✓ Suitable for 6500V 130x140mm and 190x140mm IGBT modules

### Applications

- ✓ Traction
- ✓ Railroad power supplies
- ✓ Light rail vehicles
- ✓ HVDC
- ✓ Flexible AC transmission systems (FACTS)
- ✓ Medium-voltage converters
- ✓ Industrial drives
- ✓ Wind-power converters
- ✓ Medical applications
- ✓ Research
- ✓ And many others

## Preliminary Data Sheet

### Safety Notice!

The data contained in this data sheet is intended exclusively for technically trained staff. Handling all high-voltage equipment involves risk to life. Strict compliance with the respective safety regulations is mandatory!

Any handling of electronic devices is subject to the general specifications for protecting electrostatic-sensitive devices according to international standard IEC 60747-1, Chapter IX or European standard EN 100015 (i.e. the workplace, tools, etc. must comply with these standards). Otherwise, this product may be damaged.

### Important Product Documentation

This data sheet contains only product-specific data. For a detailed description, must-read application notes and common data that apply to the whole series, please refer to the "Description & Application Manual for 1SP0335 SCALE-2 IGBT Drivers" on [www.IGBT-Driver.com/go/1SP0335](http://www.IGBT-Driver.com/go/1SP0335).

The gate resistors as well as the auxiliary gate capacitor on this gate driver are not assembled in order to provide maximum flexibility. For the values required for specific IGBT modules, refer to the paragraph on "Gate Resistor Assembly". Use of gate resistors and gate auxiliary capacitors other than those specified may result in failure.

### Mechanical Dimensions

Dimensions: See the relevant "Description and Application Manual"

Mounting principle: Connected to IGBT module with screws

### Fiber-Optic Interfaces (1SP0335x2Mx)

Interface	Remarks	Part type #
Drive signal input	1SP0335V, fiber-optic receiver (Notes 1, 2)	HFBR-2522Z
Drive signal input	1SP0335S, fiber-optic receiver (Notes 1, 2)	HFBR-2412Z
Status output	1SP0335V, fiber-optic transmitter (Notes 1, 3)	HFBR-1522Z
Status output	1SP0335S, fiber-optic transmitter (Notes 1, 3)	HFBR-1412Z

### Electrical Connectors

Interface	Remarks	Part type #
Power supply connector X1	On-board connector (Note 4)	214012
Bus connectors X2 and X3	On-board connectors (Note 5)	214013

## Preliminary Data Sheet

### Absolute Maximum Ratings

Parameter	Remarks	Min	Max	Unit
Supply voltage $V_{DC}$	VDC to COM	0	30	V
Average supply current $I_{DC}$	1SP0335x2Mx only (Note 6)		215	mA
Average supply current $I_{DC}$	1SP0335x2Mx with three 1SP0335D2Sx (Note 6)		740	mA
Gate output power	1SP0335x2Mx, $T_a < 70^\circ\text{C}$ (Note 7)		3.5	W
	1SP0335x2Mx, $T_a = 85^\circ\text{C}$ (Note 7)		2.5	W
Gate output power	1SP0335D2Sx, $T_a < 70^\circ\text{C}$ (Note 8)		3.3	W
	1SP0335D2Sx, $T_a = 85^\circ\text{C}$ (Note 8)		2.3	W
Switching frequency F	1SP0335x2Mx, $T_a < 70^\circ\text{C}$ (Note 28)		n.d.	kHz
	1SP0335x2Mx, $T_a = 85^\circ\text{C}$ (Note 28)		n.d.	kHz
Switching frequency F	1SP0335D2Sx, $T_a < 70^\circ\text{C}$ (Note 28)		n.d.	kHz
	1SP0335D2Sx, $T_a = 85^\circ\text{C}$ (Note 28)		n.d.	kHz
Gate peak current $I_{out}$	Note 9	-35	+35	A
DC-link voltage	Switching operation (Note 10)		4400	V
	Off state (Note 11)		5200	V
Operating voltage	Collector-emitter voltage		6500	$V_{peak}$
Max. emitter-emitter voltage	Between parallel connected drivers (Note 12)		200	$V_{peak}$
dV/dt	Between parallel connected drivers (Note 13)		50	kV/ $\mu\text{s}$
Max. interface current	X2 and X3, total RMS value (Note 14)		4	$A_{rms}$
	X2 and X3, total peak value (Note 14)		20	$A_{peak}$
Operating temperature		-40	+85	$^\circ\text{C}$
Storage temperature		-40	+90	$^\circ\text{C}$

### Recommended Operating Conditions

Power Supply	Remarks	Min	Typ	Max	Unit
Supply voltage $V_{DC}$	To COM	23.5	25	26.5	V

## Preliminary Data Sheet

### Electrical Characteristics

All data refer to +25°C and  $V_{DC} = 25V$  unless otherwise specified

Power Supply	Remarks	Min	Typ	Max	Unit
Supply current $I_{DC}$	Without load, only 1SP0335x2Mx		45		mA
	Without load, per additional 1SP0335D2Sx		20		mA
Power Supply Monitoring	Remarks	Min	Typ	Max	Unit
Supply threshold $V_{iso}-V_{ee}$	Clear fault	12.1	12.6	13.1	V
	Set fault (Note 15)	11.5	12.0	12.5	V
Monitoring hysteresis	Set/clear fault	0.35			V
Supply threshold $V_{ee}-V_{COM}$	Clear fault	5	5.15	5.3	V
	Set fault (Note 15)	4.7	4.85	5	V
Monitoring hysteresis	Set/clear fault	0.15			V
Bus to 1SP0335D2Sx	Remarks	Min	Typ	Max	Unit
Supply voltage			VDC		V
Turn-off command	To COM		0		V
Turn-on command	To COM		15		V
Gate Monitoring	Remarks	Min	Typ	Max	Unit
Turn-on threshold $V_{GE,on,min}$	$G_{mean}$ to E, set fault (Note 16)		12.9		V
Turn-off threshold $V_{GE,off,max}$	$G_{mean}$ to E, set fault (Note 16)		-7.6		V
Filter delay	Turn-on (Note 16)		28		µs
	Turn-off (Note 16)		42		µs
Short-circuit Protection	Remarks	Min	Typ	Max	Unit
Static Vce-monitoring threshold	Between auxiliary terminals (Note 17)		247		V
Response time	DC-link voltage = 4400V (Note 18)		5.9		µs
	DC-link voltage = 3000V (Note 18)		6		µs
	DC-link voltage = 2200V (Note 18)		6.4		µs
	DC-link voltage = 1500V (Note 18)		10.2		µs
	DC-link voltage = 1500V (Note 18)		10.2		µs
Delay to IGBT turn-off	After the response time (Note 19)		0.3		µs
Timing Characteristics	Remarks	Min	Typ	Max	Unit
Turn-on delay $t_{d(on)}$	Note 20		190		ns
Turn-off delay $t_{d(off)}$	Note 20		185		ns
Timing Characteristics	Remarks	Min	Typ	Max	Unit
Output rise time $t_{r(out)}$	G to E (Note 21)		9		ns
Output fall time $t_{f(out)}$	G to E (Note 21)		30		ns

## Preliminary Data Sheet

Timing Characteristics	Remarks	Min	Typ	Max	Unit
Transmission delay of fault state	Note 22		90		ns
Delay to clear fault state	After IGBT short circuit (Note 23)		9		μs
	After gate-monitoring fault (Notes 23, 27)		1		μs
Acknowledge delay time	Note 24		250		ns
Acknowledge pulse width	On host side	400	700	1050	ns

Gate Output	Remarks	Min	Typ	Max	Unit
Turn-on gate resistor $R_{g(on)}$	Note 25		not assembled		Ω
Turn-off gate resistor $R_{g(off)}$	Note 25		not assembled		Ω
Auxiliary gate capacitor $C_{ge}$	Note 25		not assembled		nF
Gate voltage at turn-on	Note 26		15		V
Gate-voltage at turn-off	Note 26		-10		V

### Footnotes to the Key Data

- 1) The transceivers required on the host controller side are not supplied with the gate driver. It is recommended to use the same types as used in the gate driver. For product information refer to [www.IGBT-Driver.com/go/fiberoptics](http://www.IGBT-Driver.com/go/fiberoptics)
- 2) The recommended transmitter current at the host controller is 20mA. A higher current may increase jitter or delay at turn-off.
- 3) The typical transmitter current at the gate driver is 18mA. In case of supply undervoltage, the minimum transmitter current at the gate driver is 12mA: this is suitable for adequate plastic optical fibers with a length of more than 10 meters.
- 4) This refers to the manufacturer ordering number, see [www.igbt-driver.com/go/ext\\_erni](http://www.igbt-driver.com/go/ext_erni). The customer-side connector as well as cables with different lengths can be supplied by CONCEPT. Refer to the "Description & Application Manual for 1SP0335 SCALE-2 IGBT Drivers" for more information.
- 5) This refers to the manufacturer ordering number, see [www.igbt-driver.com/go/ext\\_erni](http://www.igbt-driver.com/go/ext_erni). These connectors are to be used to connect 1SP0335x2Mx (master) or 1SP0335D2Sx (slave) to 1SP0335D2Sx (slave) if parallel connection of IGBT modules is required. Cables with different lengths can be supplied by CONCEPT. Refer to the "Description & Application Manual for 1SP0335 SCALE-2 IGBT Drivers" for more information.
- 6) If the specified value is exceeded, this indicates a driver overload. It should be noted that the driver is not protected against overload.
- 7) The given power can only be fully exploited without slaves 1SP0335D2Sx (no parallel connection of IGBT modules). If the specified value is exceeded, this indicates a driver overload. It should be noted that the driver is not protected against overload. From 70°C to 85°C, the maximum permissible output power can be linearly interpolated from the given data.
- 8) The given power can be fully exploited with slaves 1SP0335D2Sx (parallel connection of IGBT modules). If the specified value is exceeded, this indicates a driver overload. It should be noted that the driver is not protected against overload. From 70°C to 85°C, the maximum permissible output power can be linearly interpolated from the given data.
- 9) The gate current is limited by the gate resistors located on the driver.
- 10) This limit is due to active clamping under switching conditions. Refer to the "Description & Application Manual for 1SP0335 SCALE-2 IGBT Drivers".
- 11) Due to the Dynamic Active Advanced Clamping Function (DA<sup>2</sup>C) implemented on the driver, the DC-link voltage can be increased in the off-state condition (e.g. after emergency shut-down). This value is only valid when the IGBTs are in the off state (not switching). The time during which the voltage can be applied should be limited to short periods (< 60 seconds). Refer to the "Description & Application Manual for 1SP0335 SCALE-2 IGBT Drivers".

---

## Preliminary Data Sheet

- 12) The maximum dynamic voltage between auxiliary emitters of parallel-connected drivers due to asymmetrical operation at turn-on and turn-off must be limited to the given value.
- 13) Maximum allowed rate of change of auxiliary emitter voltage of parallel connected drivers. This specification guarantees that the drive information will be transferred reliably even with high rate of change of auxiliary emitter voltages (asymmetrical operation).
- 14) Dynamic voltages between auxiliary emitters of parallel connected drivers at turn-on and turn-off lead to equalizing currents over the X2 or X3 bus. The peak and RMS values of the resulting current must be limited to the given value.
- 15) Undervoltage monitoring of the secondary-side supply voltage (Viso to Vee and Vee to COM which correspond with the approximate turn-on and turn-off gate-emitter voltages). If the corresponding voltage drops below this limit on 1SP0335x2Mx (masters), all paralleled IGBTs (master and slaves) are switched off and a fault is transmitted to the status output. If the corresponding voltage drops below this limit on 1SP0335D2Sx (slaves), the corresponding IGBT is switched off. If the IGBT was turned on, a fault will be generated by the gate-monitoring function on the master which will turn off all paralleled IGBT after the corresponding delay.
- 16) The mean value  $V_{GE,mean}$  of all gate voltages (master and all slaves) is filtered and compared to the given values at turn-on and turn-off. If the specified values are exceeded ( $V_{GE,mean} < V_{GE,on,min}$  at turn-on resp.  $V_{GE,mean} > V_{GE,off,max}$  at turn-off) after the given filter delay, the driver turns off all parallel-connected IGBTs and a fault is transmitted to the status output.
- 17) A dynamic Vce protection is implemented on the driver. The maximum allowed Vce voltage at turn-on is dynamically adjusted in order to better fit to the IGBT characteristics at turn-on. At the end of the turn-on process the given static value applies.
- 18) The resulting pulse width of the direct output of the gate drive unit for short-circuit type I (excluding the delay of the gate resistors) is the sum of the response time plus the delay to IGBT turn-off.
- 19) The turn-off event of the IGBT is delayed by the specified time after the response time.
- 20) Including the delay of the external fiber-optic links (cable length: 1m). Measured from the transition of the turn-on or turn-off command at the optical transmitter on the host controller side to the direct output of the gate drive unit (excluding the delay of the gate resistors).
- 21) Output rise and fall times are measured between 10% and 90% of the nominal output swing. The values are given for the driver side of the gate resistors with  $2\Omega/1\mu F$  load. The time constant of the output load in conjunction with the present gate resistors leads to an additional delay at their load side.
- 22) Delay of external fiber-optic links. Measured from the driver secondary side (ASIC output) to the optical receiver on the host controller.
- 23) Measured on the host side. The fault status on the secondary side is automatically reset after the specified time.
- 24) Including the delay of the external fiber-optic links. Measured from the transition of the turn-on or turn-off command at the optical transmitter on the host controller side to the transition of the acknowledge signal at the optical receiver on the host controller side.
- 25) The gate resistors and the auxiliary gate capacitor are not assembled on this IGBT gate driver. They must be assembled by the user according to the paragraph on "Gate Resistor Assembly".
- 26) The driver supply voltage VDC is split into two distinct voltages on the driver. The first one is the turn-on voltage which is regulated at about 15V. The difference between VDC and the turn-on voltage is the turn-off voltage which is not regulated and mainly dependent on the driver input voltage VDC.
- 27) The fault status is set as long as the gate monitoring fault is present. The given value applies if the driver goes from the "off state" to the "on state" and the gate-emitter voltage of one or more parallel connected drivers does not turn on. If the driver goes from the "on state" to the "off state" and the gate-emitter voltage of one or more parallel connected drivers does not turn off, the fault status is applied as long as the gate monitoring fault is present.
- 28) The maximum switching frequency is not defined, as it depends on the IGBT module used. Please consult the corresponding driver data sheet for more information.

## Preliminary Data Sheet

### Gate Resistor and Auxiliary Gate Capacitor Assembly

The turn-on and turn-off gate resistors as well as the auxiliary gate capacitor of 1SP0335x2xx drivers are adapted to their respective IGBT modules.

Recommended gate resistors (R168, R169, R178 and R179): PR02 / 2W / 5% from Vishay.

Recommended auxiliary gate capacitor (C105): 1206 / X7R / 25V / 5%

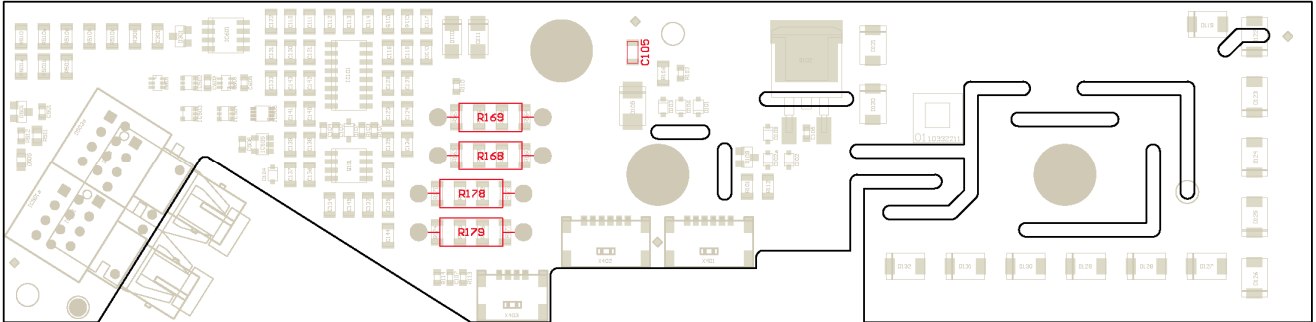
The following versions exist:

<b>6500V IGBT Type</b>	<b>R178/ R179</b>	<b>R168/ R169</b>	<b>Resulting R<sub>g,on</sub></b>	<b>Resulting R<sub>g,off</sub></b>	<b>C105</b>
FZ200R65KF2	27Ω	180Ω	13.5Ω	90Ω	22nF
FZ250R65KE3	6.2Ω	43Ω	3.1Ω	21.5Ω	not assembled
FZ400R65KF2	13Ω	91Ω	6.5Ω	45.5Ω	47nF
5SNA0500J650300	8.2Ω	47Ω	4.1Ω	23.5Ω	150nF
FZ500R65KE3	3Ω	20Ω	1.5Ω	10Ω	not assembled
5SNA0600G650100	8.2Ω	8.2Ω	4.1Ω	4.1Ω	not assembled
FZ600R65KE3	2.7Ω	18Ω	1.35Ω	9Ω	not assembled
5SNA0750G650300	5.6Ω	30Ω	2.8Ω	15Ω	220nF
FZ750R65KE3	2Ω	15Ω	1Ω	7.5Ω	not assembled
CM750HG-130R	8.2Ω	68Ω	4.1Ω	34Ω	not assembled

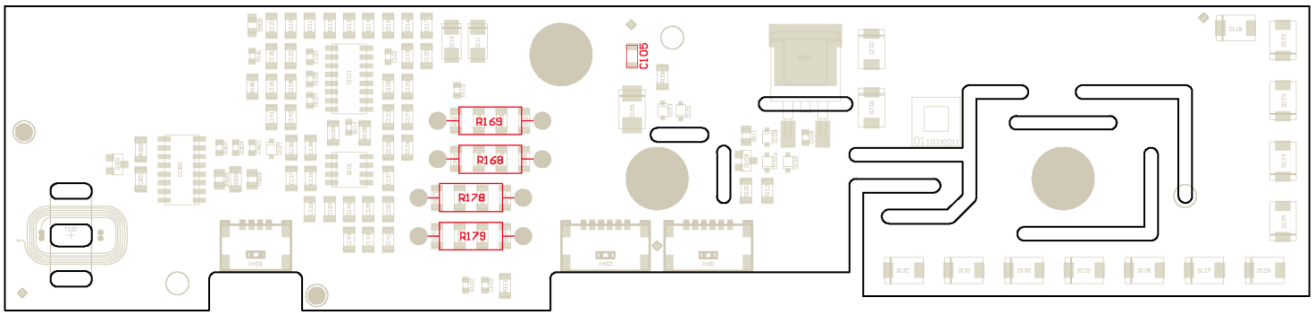
For the component position, refer to Figs. 1 and 2.

## Preliminary Data Sheet

### Assembly Drawing



*Fig. 1: Assembly drawing of 1SP0335x2Mx with highlighted gate resistors*



*Fig. 2: Assembly drawing of 1SP0335D2Sx with highlighted gate resistors*

Note that the wires of the gate resistors should not project more than 1.6mm after soldering (excess length at bottom side). Furthermore, a minimum distance of 1mm must be maintained between the gate resistor body and the PCB.

### Legal Disclaimer

This data sheet specifies devices but cannot promise to deliver any specific characteristics. No warranty or guarantee is given – either expressly or implicitly – regarding delivery, performance or suitability.

CT-Concept Technologie AG reserves the right to make modifications to its technical data and product specifications at any time without prior notice. The general terms and conditions of delivery of CT-Concept Technologie AG apply.



## Preliminary Data Sheet

### Ordering Information

The general terms and conditions of delivery of CT-Concept Technologie AG apply.

Interface	CONCEPT Driver Type #	Related IGBT
Master, Fiber-Optic Interface <sup>1)</sup>	1SP0335V2M1-65	6500V IGBT modules
Master, Fiber-Optic Interface <sup>2)</sup>	1SP0335S2M1-65	6500V IGBT modules
Slave, Electrical Interface	1SP0335D2S1-65	6500V IGBT modules

1) Fiber-optic interface with versatile link (HFBR-2522Z and HFBR-1522Z)

2) Fiber-optic interface with ST (HFBR-2412Z and HFBR-1412Z)

See "Description & Application Manual for 1SP0335 SCALE-2 IGBT Drivers"

Product home page: [www.IGBT-Driver.com/go/1SP0335](http://www.IGBT-Driver.com/go/1SP0335)

Refer to [www.IGBT-Driver.com/go/nomenclature](http://www.IGBT-Driver.com/go/nomenclature) for information on driver nomenclature

### Information about Other Products

**For other drivers, evaluation systems, product documentation and application support**

Please click onto: [www.IGBT-Driver.com](http://www.IGBT-Driver.com)

### Manufacturer

CT-Concept Technologie AG  
 A Power Integrations Company  
 Johann-Renfer-Strasse 15  
 2504 Biel-Bienne  
 Switzerland

Phone +41 - 32 - 344 47 47

Fax +41 - 32 - 344 47 40

E-mail [Info@IGBT-Driver.com](mailto:Info@IGBT-Driver.com)

Internet [www.IGBT-Driver.com](http://www.IGBT-Driver.com)

© 2010...2013 CT-Concept Technologie AG - Switzerland.

We reserve the right to make any technical modifications without prior notice.

All rights reserved.

Version from 2013-01-14